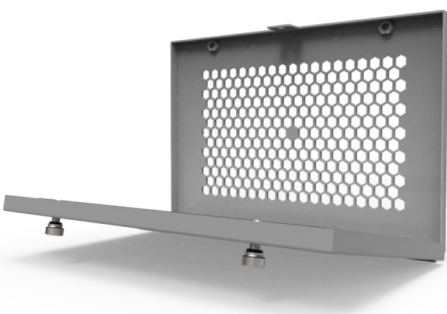


CAP-ENV

The Toughest and Most Reliable Infrared Window in The World

The CAP-ENV features a reinforced enviromentally sealed door design while also providing the largest visually clear infrared (IR) transmissive viewing area available on the market today.

The exclusive pharmaceutical-grade reinforced Poly-View System™ polymer allows any thermography camera to monitor completely undisturbed assets inside energized electrical equipment in the visual, UV and shortwave, midwave and longwave IR spectrums.



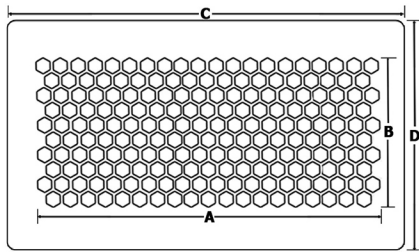
The larger rectangular viewing area provides an unparalleled field of view when compared to traditional round IR windows. The CAP-ENV offers locking covers for your IR window. These are useful in areas of high traffic and protect the IR viewing panes from impacts, flying debris and dust.

Protected by our unconditional lifetime warranty

Specifications

Materials	
Window Housing	Standard product constructed of Stainless Steel; custom materials available
Optic	UL 746 compliant, visual, UV and IR transmissive polymer; -40°C (-40°F) to 325°C (617°F)
Gaskets	UL 94 5VA TPE; -40°C (-40°F) to 273°C (523°F)
Hardware	316 stainless steel

Other	
Useful Temperature Rating	-40°C (-40°F) to 200°C (392°F)
Water and Dust Ingress	IP67 / NEMA 6



Dimensions

Model	Window Dimensions	Overall Dimensions
CAP-ENV-4	A= 9.68 cm (3.81 in), B= 9.77 cm (3.85 in)	C= 15.24 cm (6 in), D= 15.24 cm (6 in)
CAP-ENV-6	A= 9.1 cm (3.6 in), B= 15 cm (5.9 in)	C= 16 cm (6.3 in), D= 21.8 cm (8.6 in)
CAP-ENV-12	A= 23.6 cm (9.3 in), B= 12.7 cm (5.0 in)	C= 30.5 cm (12.0 in), D= 20.6 cm (8.1 in)
CAP-ENV-24	A= 53 cm (20.9 in), B= 15 cm (5.9 in)	C= 61 cm (24.0 in), D= 21.8 cm (8.6 in)

Caution: The dimensions listed above are not installation dimensions. Do NOT cut prior to receiving your IRISS window and installation template.

CAP-ENV Feature:

- IP67/ NEMA 6 reinforced enviromentally sealed lockable cover
- Combined visual, UV and IR window allows for greater flexibility
- Durable, fully impact-resistant, pharmaceutical-grade optics
- Fixed And Stable Transmission (FAST)
- Proven compatibility with acids, alkalis, UV, moisture, humidity, vibration and high frequency noise
- Reinforcing grills comply with IP2x standard for safe maximum hole size and fail-safe design
- Customizable; if you don't see what you need in the standard offering you can configure:
 - Housing Materials
 - Gaskets
 - Locking Devices
 - Labeling
 - Color
- Fitting templates and instructions included

Certifications:

- Certified by UL (USA) & cUL (Canada) to the following standards:
 - 50V
 - 50E
 - 746C: Impact and Flammability
 - 1558: Impact and Load Resistance
 - 508A; ANSI 508A
- IEEE C37.20.2.a.3.6: Impact and Load
- IP67 / NEMA 6
- Lloyds of London Type Approval
- CE Marking
- IEC 62271-200 Arc Flash Compliant
- American Bureau of Shipping (ABS)
- BSI Quality ISO 9001 Certified System
- CSA C22.2 No. 14-13
- DNV (Det Norske Veritas) P261.1E Maritime, Vessel and Offshore Applications

US : +1 (941) 907 9128

APAC : +61 (0) 3 9872 3000

EMEA : +44 (0) 1245 399 713

iriss.com